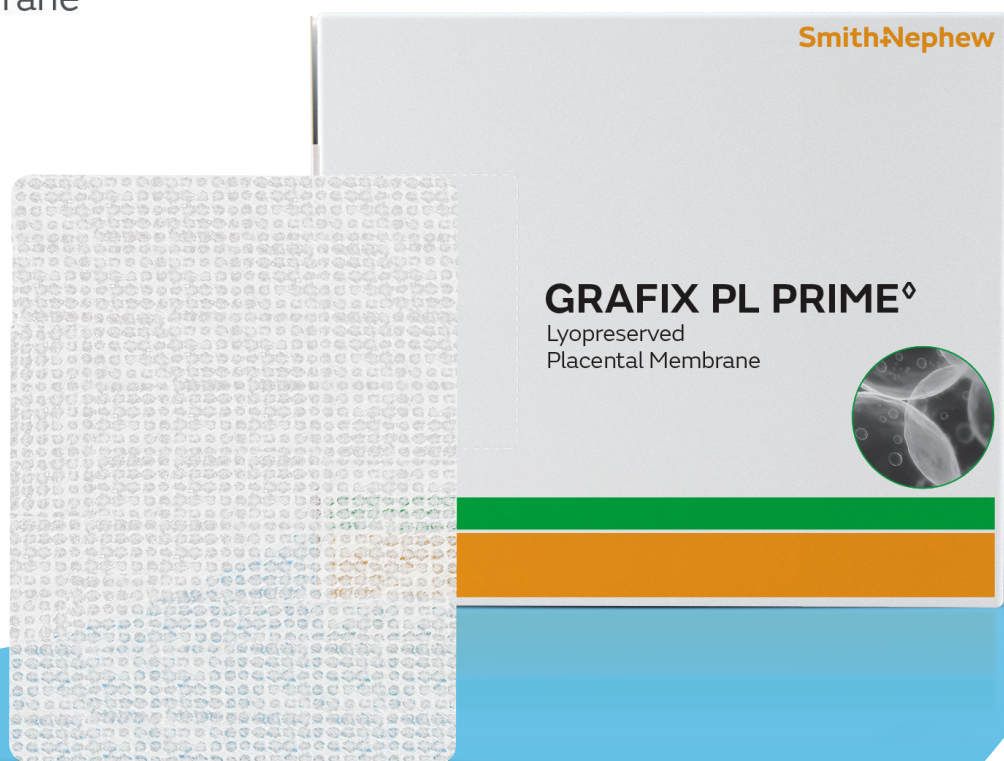


Start Strong + Finish Stronger

GRAFIX Membrane is the first choice
to help your patients' wounds close faster
and stay closed.^{1,2}

Smith+Nephew

GRAFIX[◇]
Placental Membrane



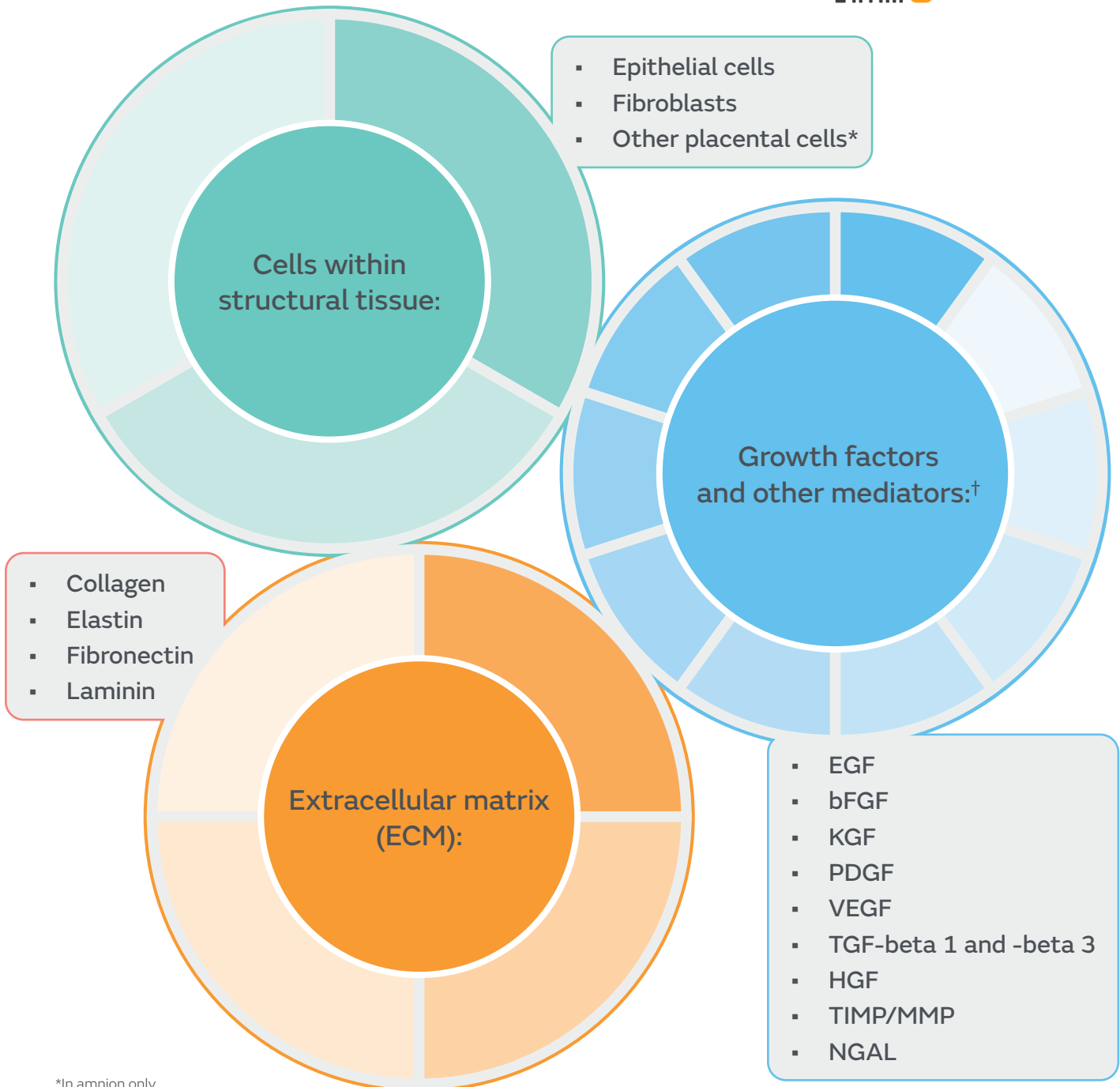
Placental membranes: nature's wound coverings

Human placental tissues are structural tissues that feature a collagen-rich matrix, native human growth factors and endogenous placental cells.³

Human placental membrane components



Learn more about placental tissues

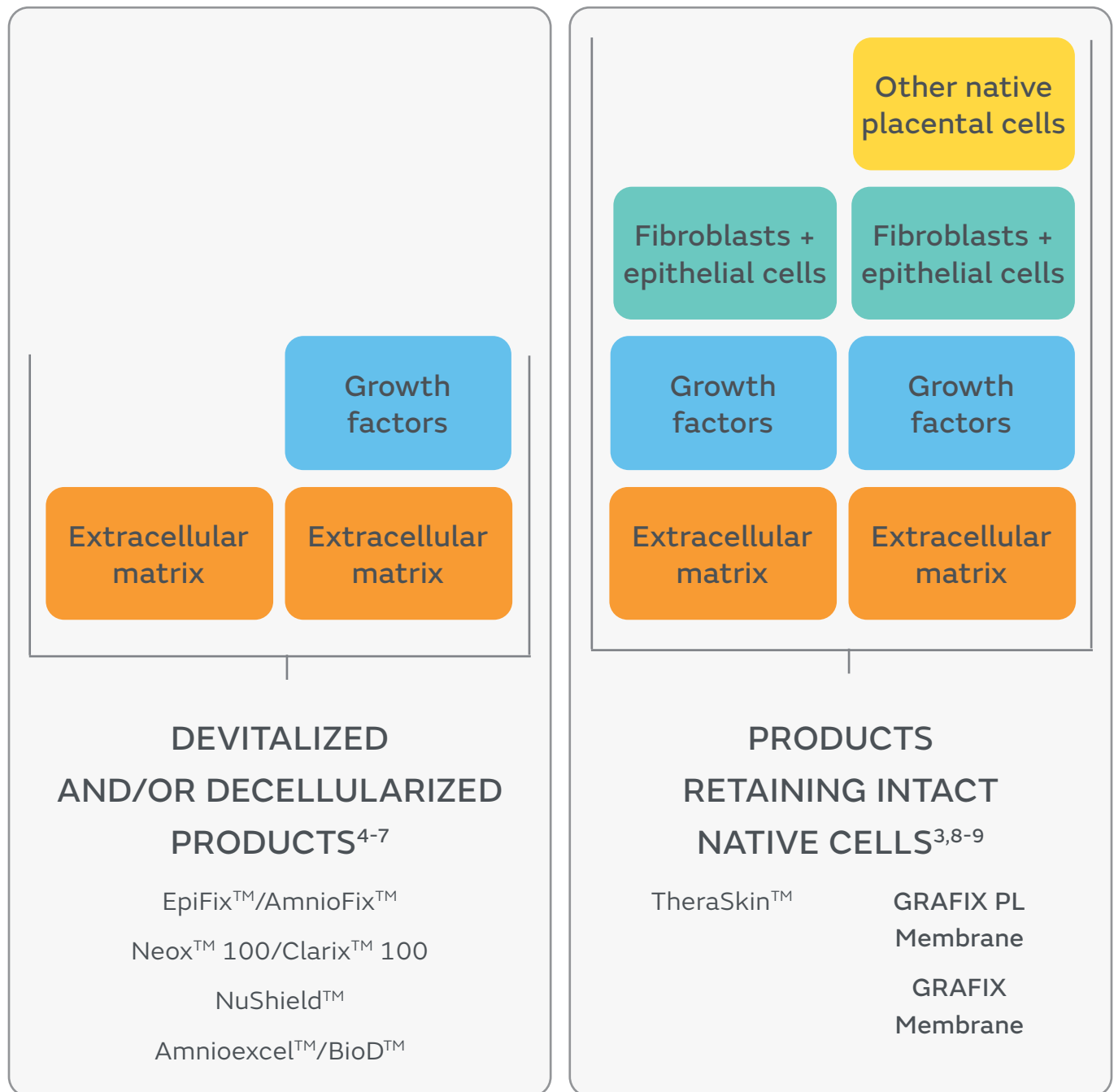


*In amnion only

†List not inclusive of all growth factors.

The preservation method of placental tissue matters

The GRAFIX[®] Membrane portfolio retains all components of placental tissue, including native placental cells³



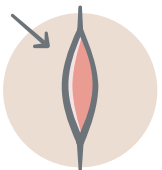


Through advanced preservation methods **GRAFIX[®] Membrane** retains all three native components of human placental membranes, including native placental cells.³

Stalled wounds don't have to devastate lives or clinical outcomes

Put **GRAFIX Membrane** to work for even more wounds

Our advanced preservation methods minimize manipulation of the native amniotic membrane and retain all three native components of human placental membranes, including native placental cells.³



Easy to apply directly to wounds and compromised surgical sites



Conforms over bone, tendon, and other structures

Available in two storage options:

- + **GRAFIX PL Membrane** – lyopreserved, stored at room temperature for off-the-shelf convenience
- + **GRAFIX Membrane** is cryopreserved and stored at -75°C to -85°C

Highest Overall Efficacy*

DFUs, VLU's and complex surgical sites¹⁰

Get chronic wounds closed faster

Superior outcomes with GRAFIX[®] Membrane

In an assessment conducted by the National Institute for Health and Care Excellence (NICE) evaluating the quality of data for dermal substitute studies in diabetic foot ulcers, this study had the highest overall effect. GRAFIX Membrane was the only dermal substitute determined to have high quality of evidence with no serious risk of bias.¹⁰



In a prospective, 20-center, randomized, single-blinded, controlled trial* with third-party blinded image verification, GRAFIX Membrane showed significantly higher complete closure rate.¹

*Versus standard of care. **Trial had three phases: **1.** A blinded phase of treatment with weekly GRAFIX (n=50) versus treatment with standard of care alone (n=47) with a primary endpoint of 100% re-epithelialization by week 12. **2.** A follow-up phase with visits every 4 weeks for an additional 12 weeks. **3.** An open-label phase where patients in the control arm failing to close after 12 weeks were given the opportunity to receive GRAFIX for 12 weeks.



3X increase
in wound closure¹

with GRAFIX Membrane
versus standard care
(62.0% vs. 21.3%; p=0.0001)



27.5 days
sooner¹

for wounds to
completely close with
GRAFIX Membrane
versus standard care



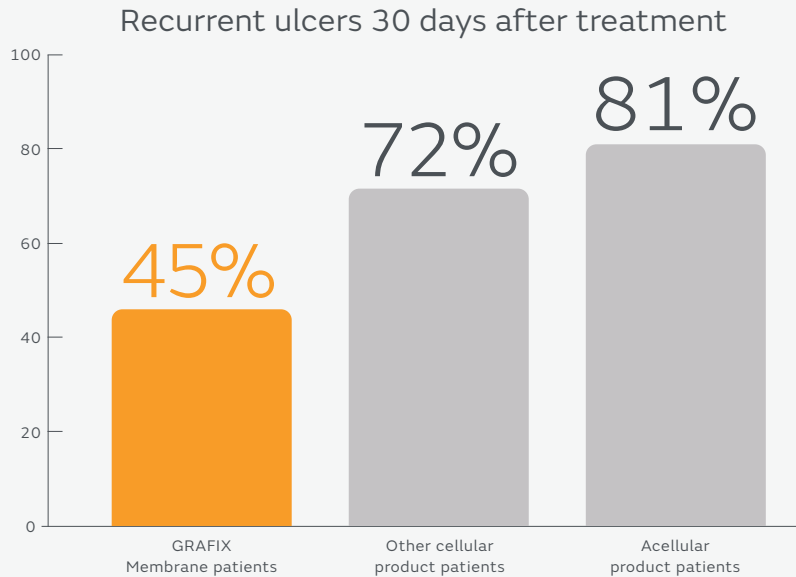
67.8%
probability¹

of complete wound closure
in the open-label phase
with addition of
GRAFIX Membrane
to standard care*

Chronic wounds – now closing for good

Patients treated with GRAFIX[®] Membrane showed a significant reduction in the likelihood of new or recurrent DFUs²

Once closed, keep them closed (DFUs)²



A retrospective analysis of Medicare claims (2013-2017) for 7,869 patients showed **significant reduction in the likelihood of new or recurrent DFUs** in patients treated with GRAFIX Membrane.²

Reduce the risk of infection, recurrence, and amputation

GRAFIX Membrane significantly outperformed other cellular and/or tissue-based products (CTPs) in the following areas:



Lower occurrence of cellulitis/abscess of the foot
at 30, 90, 180 and 365 days outcomes²



Lower occurrence of cellulitis/abscess of the toe
at 80 and 365 days²

The occurrence of gangrene, osteomyelitis and paronychia treated with GRAFIX Membrane outperformed other cellular and acellular CTPs but did not meet statistical significance (p=0.051-0.094).

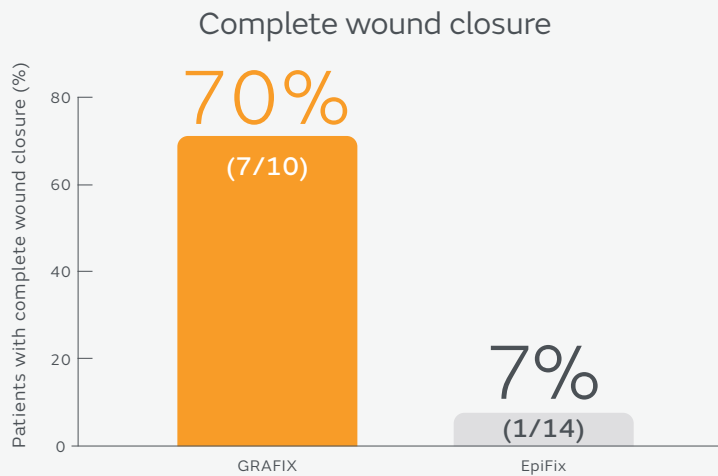
Close larger wounds

Help VLU's close faster and stay closed

Patients treated with GRAFIX[®] Membrane for chronic wounds, including VLUs, had low recurrence rates.¹¹



Significantly higher closure rate than EpiFix in VLUs¹²



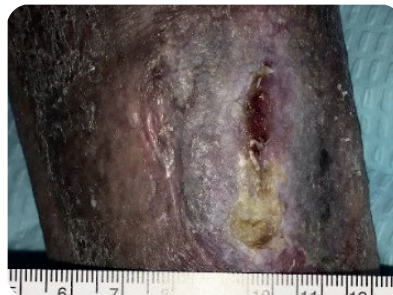
In an efficacy study comparing GRAFIX Membrane versus EpiFix in chronic venous leg ulcers, the closure rate with GRAFIX Membrane was significantly higher ($p=0.0024$).¹²

Note: Across all wound types, those closed with GRAFIX were 4x larger.



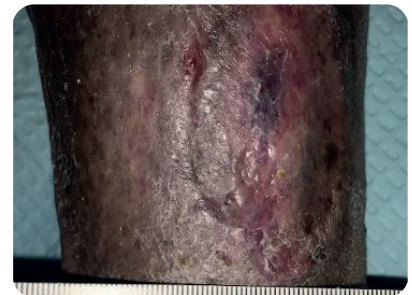
Application #1

Length: 2.6 cm
Width: 1.5 cm
Depth: 0.1 cm



Application #2

Length: 1.2 cm
Width: 0.4 cm
Depth: 0.1 cm



Application #3

Length: 0 cm
Width: 0 cm
Depth: 0 cm

In one case study, there was an 87% surface area reduction in wound size demonstrated after 2 applications of GRAFIX PL Lyopreserved Placental Membrane. In addition to standard of care and multi-layer compression, 3 serial applications of GRAFIX PL Membrane achieved **complete closure at week 5**.¹³

87%
Surface area
reduction after
2 applications¹³

GRAFIX[◊] Membrane is covered by all national payers including Medicare

For information on reimbursement for GRAFIX Membrane products, visit:
grafixpl.com/reimbursement

Product Description	Size	Part Number
GRAFIX [◊] PL PRIME	16 mm diameter (2 cm ²)	PS13016
GRAFIX PL PRIME	1.5 cm x 2 cm (3 cm ²)	PS13015
GRAFIX PL PRIME	2 cm x 3 cm (6 cm ²)	PS13023
GRAFIX PL PRIME	3 cm x 3 cm (9 cm ²)	PS13033
GRAFIX PL PRIME	3 cm x 4 cm (12 cm ²)	PS13034
GRAFIX PL PRIME	5 cm x 5 cm (25 cm ²)	PS13055
GRAFIX [◊] PL XC	5 cm x 5 cm (25cm ²)	PS15055
GRAFIX PL XC	7 cm x 7 cm (49 cm ²)	PS15077
GRAFIX PL XC	7.5 cm x 15 cm (25 cm ²)	PS15075
GRAFIX [◊] PRIME	16 mm diameter (2 cm ²)	PS60013
GRAFIX PRIME	1.5 cm x 2 cm (3 cm ²)	PS11015
GRAFIX PRIME	2 cm x 3 cm (6 cm ²)	PS11023
GRAFIX PRIME	3 cm x 4 cm (12 cm ²)	PS11034
GRAFIX PRIME	5 cm x 5 cm (25 cm ²)	PS11055

REFERENCES

- Lavery LA, Fulmer J, Shebetka KA, et al. The efficacy and safety of GRAFIX[◊] for the treatment of chronic diabetic foot ulcers: results of a multi-centre, controlled, randomised, blinded, clinical trial. *Int Wound J*. 2014;11(5):554–560.
- DaVanzo J, Hartzman A, Surfield C, Dobson A. Cryopreserved placental membrane allograft reduces the likelihood of developing a new or recurring foot ulcer and all-cause mortality in diabetic patients, when compared to other cellular- and tissue-based products. *Adv Wound Care*. 2022 Apr 25.
- Dhall S, et al. *Plos One*. 2018; 13 (10): e0204060.
- Epifix/Dhacm: Koob, Thomas J., et al. "Properties of dehydrated human amnion/chorion composite grafts: implications for wound repair and soft tissue regeneration." *Journal of Biomedical Materials Research Part B: Applied Biomaterials* 102.6 (2014): 1353-1362.
- BioTissue Surgical (Clarix/Neox): <https://biotissue.com/technology/> States "By devitalizing the resident living cells, CryoTek minimizes the risk of an immune reaction while preserving key components of the extracellular matrix".
- NuShield (citation from company website): McQuilling, John P, et al. "Characterisation of dehydrated amnion chorion membranes and evaluation of fibroblast and keratinocyte responses in vitro." *International Wound Journal* 16.3 (2019): 827-840.
- Amnioexcel (citation from their website): Moore, Marc C., et al. "Biological characterization of dehydrated amniotic membrane allograft: Mechanisms of action and implications for wound care." *Journal of Biomedical Materials Research Part B: Applied Biomaterials* 108.8 (2020): 3076-3083.
- Theraskin: Landsman, Adam, et al. "Characterization of a cryopreserved split-thickness human skin allograft–TheraSkin." *Advances in Skin & Wound Care* 29.9 (2016): 399-406.
- Johnson et al., Understanding the impact of preservation methods on the integrity and functionality of placental allografts, *Annals of Plastic Surgery*, epub ahead of print, April 12, 2017.
- Diabetic foot problems: prevention and management. National Institute for Health and Care Excellence (NICE) guideline. Published: January 2016. <https://www.nice.org.uk/guidance/ng19/evidence/appendix-i-grade-profiles-15672915540>.
- Regulski followup: Matthew Regulski, D. P. M., et al. "A retrospective analysis of a human cellular repair matrix for the treatment of chronic wounds." *ostomy wound management* 59.12 (2013): 38-43.)
- A comparative outcomes analysis evaluating clinical effectiveness in two different human placental membrane products for wound management Eric L. Johnson, MD1 ; James T. Marshall, MHS, CWS, PA-C1 ; Georgina M. Michael, MSN, FNP-BC2.
- Reyzelman AM, Vartivarian M, Danilkovitch A, Saunders MC. A Prospective, Single-center, Open-label Case Series Evaluating the Clinical Outcomes of Lyopreserved Placental Membrane Containing Viable Cells in the Treatment of Chronic Wounds. *Wounds* 2019; 31(4): 97–102.

For detailed product information, including indications for use, contraindications, precautions and warnings, please consult the product's applicable Instructions for Use (IFU) prior to use.

Advanced Wound Management
Smith & Nephew, Inc.
Fort Worth, TX 76109, USA
T – 888-674-9551
F – 443-283-4419
www.smith-nephew.com

www.grafixpl.com
[◊]Trademark of Smith+Nephew. All Trademarks acknowledged.
GRAFIX is a trademark of Osiris Therapeutics, Inc., a Smith+Nephew group company.
©2024 Smith+Nephew All rights reserved
GFPE5-41893-0424